



## SIGNALTEK-FO FIRMWARE UPGRADE PROCEDURES

AUGUST 2007

1. Start with NE & FE Powered OFF, and AC securely connected to both handsets.  
[ NE = Near End, Display ]  
[ FE = Far End, Remote ]  
[IF USING BATTERIES. Be sure the AA-Alkaline Batteries in use are brand new batteries to prevent units from being damaged while upgrading firmware. Damaged units would require factory service.]
2. Securely connect the NE to the FE by using one RJ-45 patchcord. Power on the Far End.
3. With the latest firmware executable file on the USB-thumb drive, connect the USB thumb drive to the Near End.  
**\*\* NOTE: DO NOT remove the USB-Thumb drive until both NE & FE upgrade processes had successfully completed.**  
[Be sure that ONLY the latest firmware file is on the USB-thumb drive, NO other previous versions should exist to prevent miscommunication during the upgrade process.]
4. Power up the Near End, and wait for NE Firmware to upgrade automatically [see figure 4(a)]. This process might take a few minutes to complete. Upon completion, the screen would look like figure 4(b).



Figure 4(a): Firmware Upgrading



Figure 4(b): Firmware Upgrade Completed

5. Once the NE firmware upgrade has successfully completed, the Near End LCD screen will revert to the main screen with a popup message indicating a mismatch of Firmware version from the FE. Two options OK and Cancel can be seen in figure 5(a).  
[Press OK to upgrade the Far End handset.]

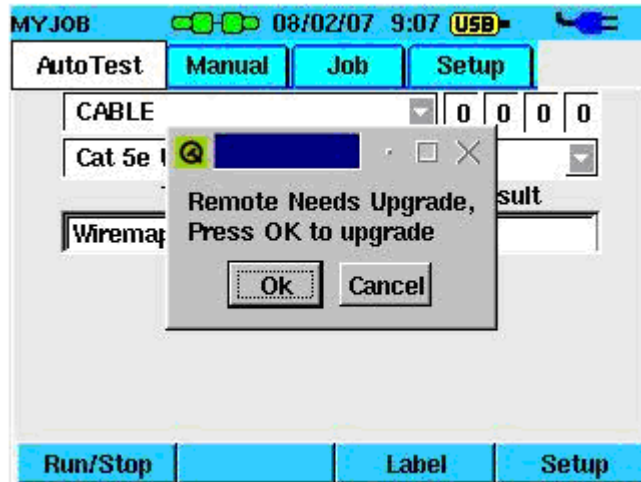


Figure 5(a): Prompt for Far End Upgrade

6. Upon selecting OK, the Near End will upgrade the Far End. The upgrade process might take a few minutes to complete, please be patient and wait for instructions from the screen as shown below:

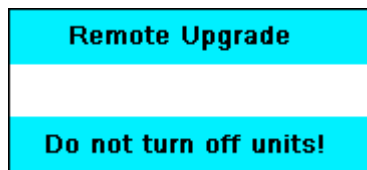


Figure 6(a): Beginning with Upgrade FE from NE.



Figure 6(b): Beginning with Upgrade FE from NE.

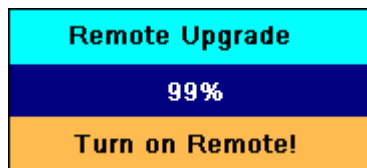


Figure 6(c): Upon completion of the FE Upgrade process



Figure 6(d): Upgrade successfully Completed

7. As the first step of the FE upgrade has been verified, the FE will automatically power OFF.
8. Follow the prompt messages from the NE as shown in figure 6(b) and 6(c). Power the FE ON again to complete the upgrade process.
9. On the NE, scroll to the SETUP tab and select Firmware Version. Inside this screen, press the F2 soft key [MORE] to verify the complete status and that versions for both handsets are correct as seen in Figure 10(a) and 10(b) below:

```
[   Display Version → SIGNALTEK F1.1.0.0   ]  
[   Remote Version → 0014                   ]
```

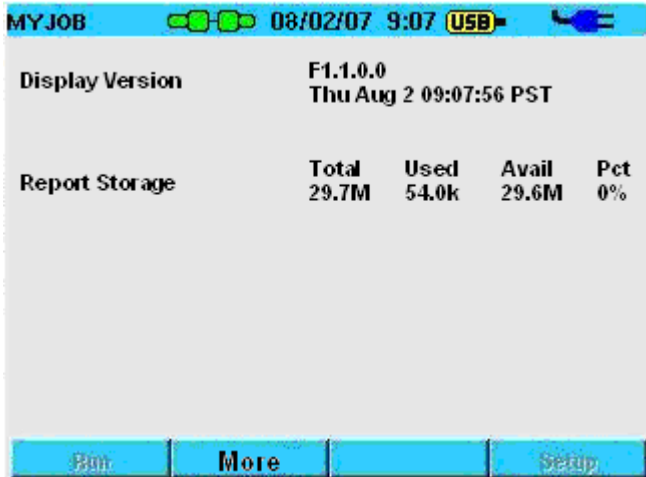


Figure 9(a): Main Firmware Version screen after successful Firmware Upgrade



Figure 9(b): Detailed information screen of Firmware Versions and other System information.

10. Press ESCAPE and scroll back to the AUTOTEST tab, remove the USB thumb drive and proceed with testing. Firmware Upgrade is completed and is READY for testing as seen in Figure 10(a) below:

- Delete firmware file from the USB-thumb drive if there are no more handsets to update, otherwise the unit will try to upgrade when rebooted.

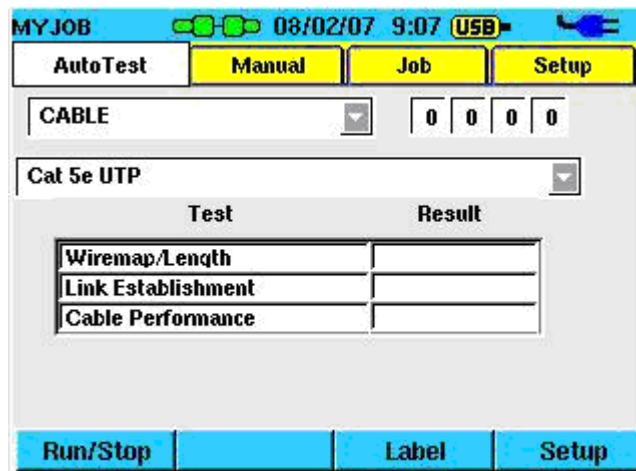


Figure 10(a): Main Autotest screen after completion of Firmware Upgrade of NE & FE

**LAN Testing Technical Support Contacts:**

United States & Canada	Mike Lizama	1-800-854-2708, x7044
China	Chris Ma	86-10-8518-3141 or 86-10-8518-3142
Germany / Europe	Alfred Huber	49-89-99686-0
Brazil	Dennis Rossi	55-11-3759-8776
Mexico	Fernando Alba	33-36789176
All Other Regions	Michael Lizama	001-800-854-2708, x7044



## FIRMWARE RELEASE, SIGNALTEK-FO F1.1.0.0 LIST OF NEW FEATURES

1. Firmware Version screen additions:
  - a. Soft key with capability to resume/or Restart FE upgrade with exceptions should a previous FE upgrade failed
  - b. Status of previous Remote Upgrade:
    1. Complete
    2. InProgress
    3. Cancelled
    4. None
2. Capability of reading & displaying Power Level from Ethernet Switch in Fiber mode.
3. Language Enhancements:
  - a. Language screens are displayed in local language translation for easy selection
  - b. Fonts and sizes are improved for readability
4. Additional of Languages, +5 languages total:
  - a. Chinese
  - b. Polish
  - c. Russian
  - d. Spanish
  - e. Vietnamese
5. Additional Cable Type:
  - a. CAT 7 Cable
6. Enhancement of Wiremap Detection:
  - b. Crossover Cables
  - c. Skew
  - d. Polarity
7. PING & DHCP Improvements:
  - a. Switching between Automatic vs. Manual DHCP would not disable the ports, a tester reboot would not be required.
  - b. DHCP & PING IP Conflict error indication
  - c. ARP Table – scans & displays all active IP & MAC addresses on the network
  - d. Report of different PING Response Time:
    1. Maximum
    2. Average
    3. Minimum
8. Additional Test Storage & Report Features
  - a. Indication of PASS or FAIL of the overall result in Test Details
  - b. Layout improvement with XML & Print Reports